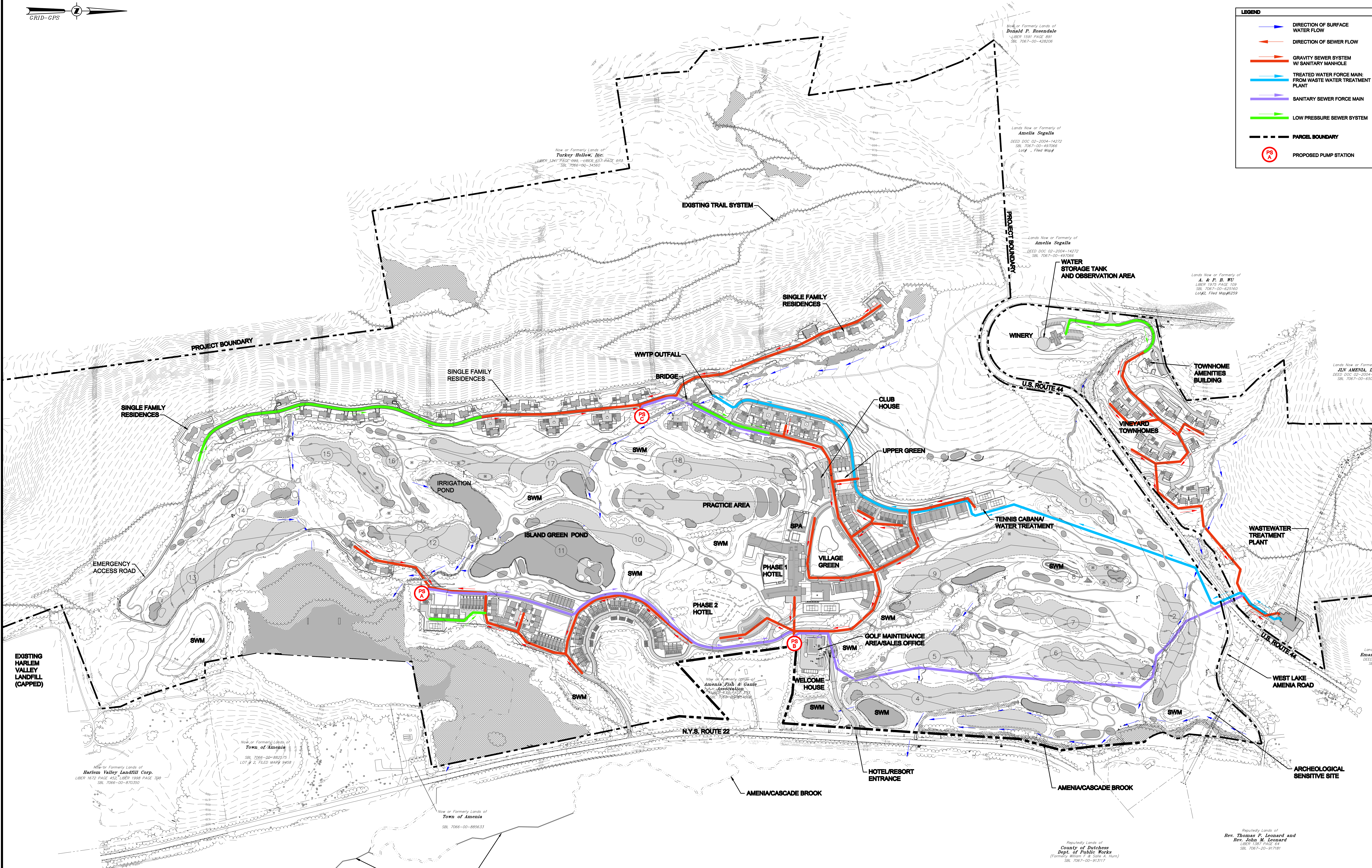


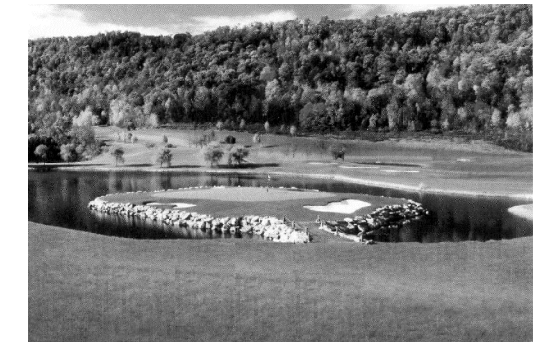
LEGEND

- DIRECTION OF SURFACE WATER FLOW
- DIRECTION OF SEWER FLOW
- GRAVITY SEWER SYSTEM W/ SANITARY MANHOLE
- TREATED WATER FORCE MAIN: FROM WASTE WATER TREATMENT PLANT
- SANITARY SEWER FORCE MAIN
- LOW PRESSURE SEWER SYSTEM
- PARCEL BOUNDARY
- PROPOSED PUMP STATION



STREAM ROUTE NOT YET SURVEYED FOR THIS SEGMENT

**Silo Ridge
Resort Community**



**ERNIE ELS
DESIGN**

1000 North Linden Avenue, Suite 110
Larchmont, NY 10503
Tel: 914-833-8800
Fax: 914-833-8801

**ROBERT A.M.
STERN
ARCHITECTS**

1000 North Linden Avenue, Suite 110
Larchmont, NY 10503
Tel: 914-833-8800
Fax: 914-833-8801

**THE
Chazen
COMPANIES**

Engineers/Surveyors
Planners
Environmental Scientists

**CHAZEN ENGINEERING, LAND SURVEYING
& LANDSCAPE ARCHITECTURE CO., P.C.**

Dutchess County Office: 21 Van Street, Poughkeepsie, New York 12601
Capital District Office: 316 Madison Avenue, New York, New York 10017
Orange County Office: 120 Oak Street, Newburgh, New York 12550
North County Office: 120 Oak Street, Oneonta, New York 13827

REV.	DATE	DESCRIPTION
1	2/7/08	REVISED MDP SUBMISSION
2	02/08	

**SILO RIDGE RESORT COMMUNITY
TRADITIONAL NEIGHBORHOOD ALTERNATIVE**

**OVERALL WASTEWATER MASTER PLAN
MASTER DEVELOPMENT PLAN**

TOWN OF AMENIA, DUTCHESS COUNTY, NEW YORK

Drawn: CAM
Checked: PVB/JAR
Date: 12/7/07
Scale: 1"=200'
Project No: 10454.02
Sheet No: SP10
14 OF 17