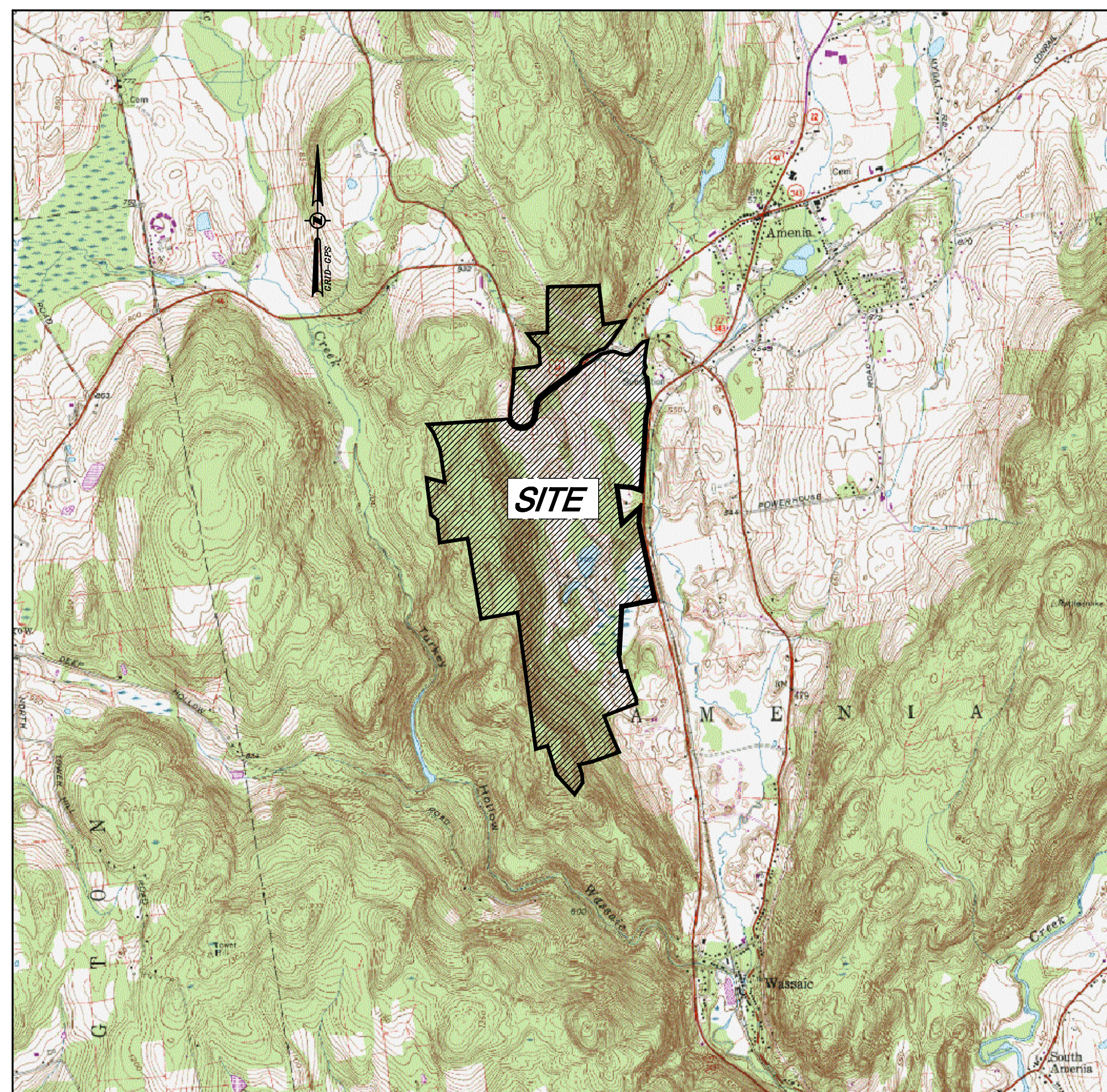


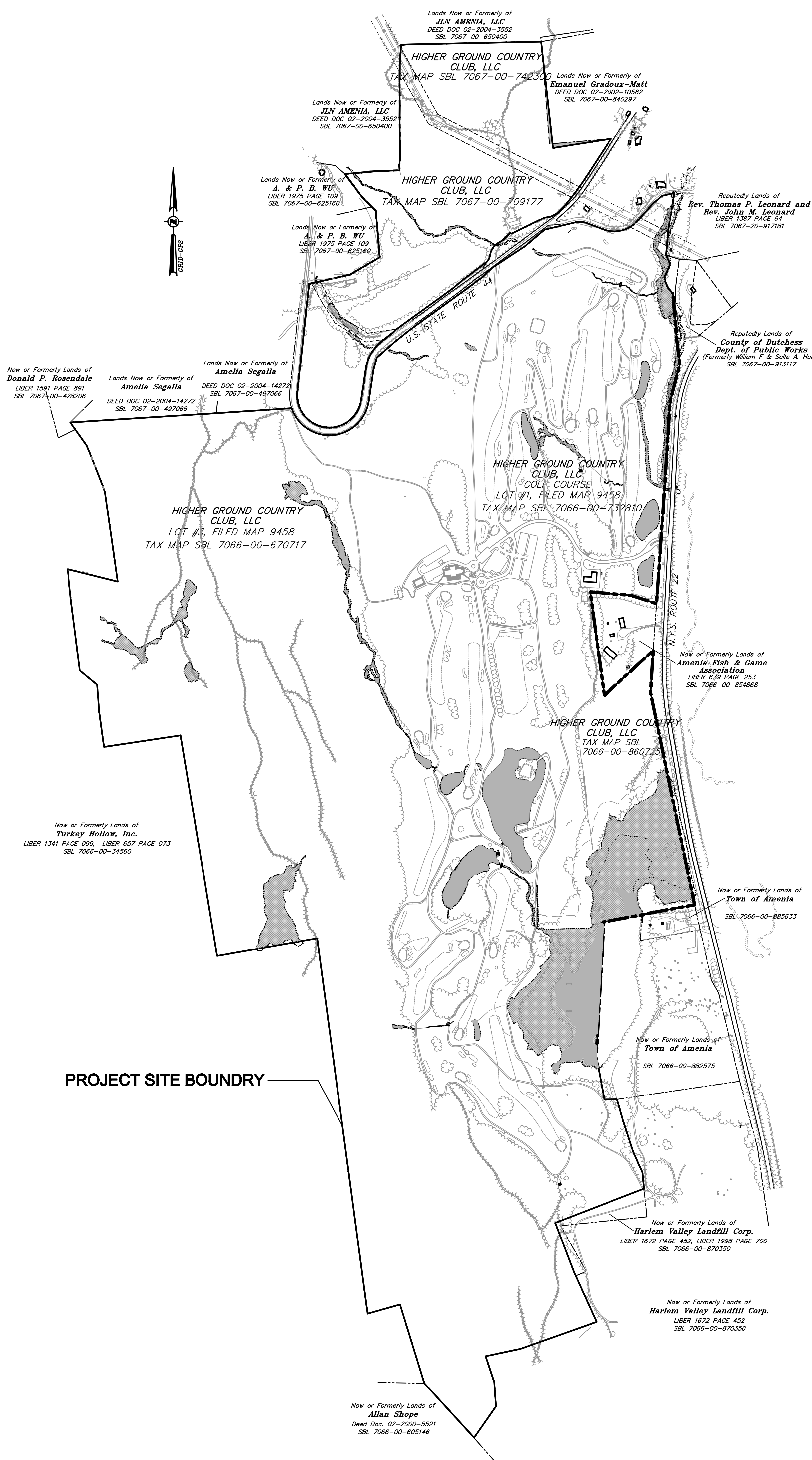
# PRELIMINARY MASTER DEVELOPMENT PLAN for Purposes of SEQRA

## SILO RIDGE RESORT COMMUNITY TOWN OF AMENIA ◦ DUTCHESS COUNTY ◦ NEW YORK

**APPLICANT:**  
HIGHER GROUND COUNTRY CLUB  
MANAGEMENT CO, LLC  
SILO RIDGE COUNTRY CLUB  
PO BOX 86  
AMENIA, NY 12501



**VICINITY MAP**  
1"=2000'



**SITE LOCATION MAP**  
1" = 500'

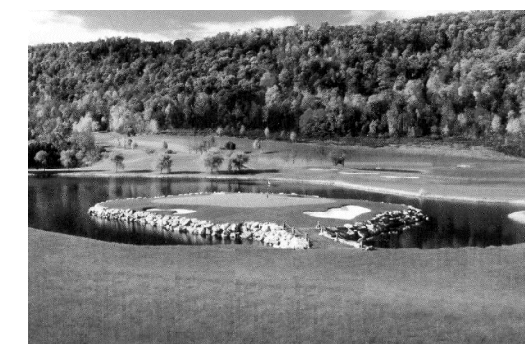
### PROJECT TEAM:

<b>CIVIL, TRAFFIC AND ENVIRONMENTAL ENGINEERS; LANDSCAPE ARCHITECTURE</b>	<b>THE CHAZEN COMPANIES</b> 21 FOX STREET POUGHKEEPSIE, NY 12601 CONTACT: MICHAEL CAMANN, L.D.
<b>ARCHITECTURE</b>	<b>ROBERT A.M. STERN ARCHITECTS, LLP</b> 480 WEST 34TH STREET NEW YORK, NY 10001 CONTACT: JANE COSTELLO
<b>SURVEY</b>	<b>THE CHAZEN COMPANIES</b> 21 FOX STREET POUGHKEEPSIE, NY 12601 CONTACT: STEVE ALEX, P.L.S.
<b>ARCHEOLOGICAL</b>	<b>THE LOUIS BERGER GROUP, INC.</b> 20 CORPORATE BLVD. ALBANY, NY 12211 CONTACT: HOPE E. LUHMAN, PH.D., RPA
<b>PLANNING</b>	<b>THE CHAZEN COMPANIES</b> 21 FOX STREET POUGHKEEPSIE, NY 12601 CONTACT: MELISSA MASCALI
<b>ATTORNEY</b>	<b>CUDDY &amp; FEDER, LLP</b> 300 WESTAGE BUSINESS CENTER SUITE 360 FISHKILL, NY 12524 CONTACT: DANIEL F. LEARY
<b>MARKETING</b>	<b>THE WEITZMAN GROUP</b> 355 LEXINGTON AVE NEW YORK, NY 10017 CONTACT: ALAN S. KRICHAVSKY
<b>PUBLIC RELATIONS</b>	<b>BECKERMAN PUBLIC RELATIONS</b> 1545 ROUTE 206 SOUTH, 2ND FLOOR BEDMINSTER, NJ 07921 CONTACT: FRED FEINER
<b>GOLF COURSE ARCHITECT</b>	<b>ERNIE ELS DESIGN</b> 16071 NORTH FLORIDA AVENUE, SUITE 119 LUTZ, FL 33549 CONTACT: GREGORY T. LETSCHE
<b>NATURAL RESOURCE MANAGEMENT PLAN</b>	<b>AUDUBON INTERNATIONAL</b> P.O. BOX 1228 CARY, NC 27512 CONTACT: MILES (BUD) SMART, PH.D.

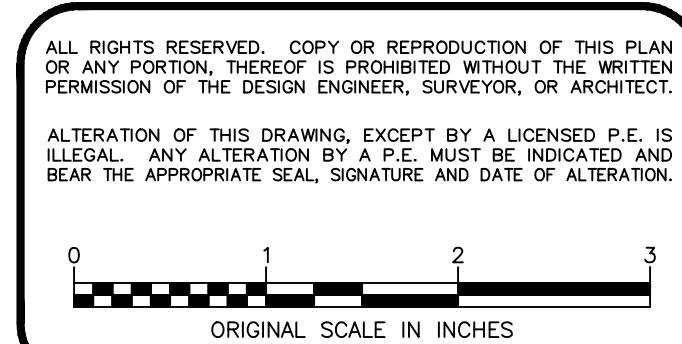
### LIST OF DRAWINGS (TRADITIONAL NEIGHBORHOOD ALTERNATIVE):

REV	SHEET	DATE	DESCRIPTION
1	T1	2/7/08	TITLE SHEET
0	SP1	12/7/2007	EXISTING SITE CONDITIONS
1	SP2	2/7/08	OVERALL SITE PLAN
1	SP3	12/7/2007	OPEN SPACE
2	SP4	2/7/08	OVERALL PHASING PLAN
1	SP5a	2/7/08	PHASE 1 MASTER DEVELOPMENT PLAN
1	SP5b	2/7/08	PHASE 1 MASTER DEVELOPMENT PLAN
1	SP5c	2/7/08	PHASE 1 MASTER DEVELOPMENT PLAN
1	SP5a	2/7/08	PHASE 2 MASTER DEVELOPMENT PLAN
1	SP5b	2/7/08	PHASE 2 MASTER DEVELOPMENT PLAN
1	SP7	2/7/08	PHASE 3 MASTER DEVELOPMENT PLAN
1	SP8	2/7/08	GRADING PLAN
1	SP9	2/7/08	GRADING PLAN
1	SP10	2/7/08	OVERALL WASTEWATER MASTER PLAN
1	SP11	2/7/08	OVERALL WATER SUPPLY SYSTEM MASTER PLAN
1	SP12	2/7/08	OVERALL CONCEPTUAL LANDSCAPING PLAN
0	SP13	2/7/08	ENVIRONMENTAL CONSTRAINTS MAP

**Silo Ridge  
Resort Community**



**ROBERT A.M.  
STERN  
ARCHITECTS**



**THE  
Chazen  
COMPANIES**  
Engineers/Surveyors  
Planners  
Environmental Scientists

**CHAZEN ENGINEERING, LAND SURVEYING  
& LANDSCAPE ARCHITECTURE CO., P.C.**

REV	DATE	DESCRIPTION
1	2/7/08	REVISED MAP SUBMISSION
0		

**SILO RIDGE RESORT COMMUNITY  
TRADITIONAL NEIGHBORHOOD ALTERNATIVE**

**TITLE SHEET  
MASTER DEVELOPMENT PLAN**

TOWN OF AMENIA, DUTCHESS COUNTY, NEW YORK

drawn	checked
12/7/07	NTS
10454.02	
T1	
1 OF 17	